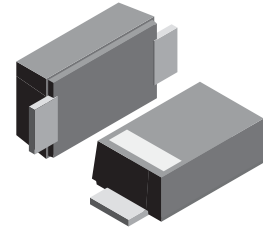


VOLTAGE RANGE: 3.6 - 200V
POWER: 2.0Watts

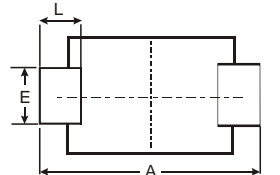
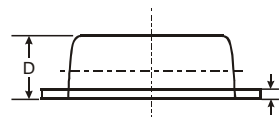
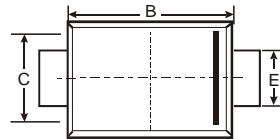


Features

- Complete Voltage Range 3.6 to 200 Volts
- High peak reverse power dissipation
- High reliability
- Low leakage current

Mechanical Data

- Case: SMBF , Molded Plastic
- Terminals: Solder Plated, Solderable per MIL-STD-750, Method 2026
- Polarity: Cathode Band or Cathode Notch
- Marking: Type Number
- Weight: 0.0018 ounces, 0.05grams



SMBF			
Dim	Min	Max	Typ
A	5.45	5.55	5.50
B	4.27	4.33	4.30
C	3.57	3.63	3.60
D	1.32	1.38	1.35
E	1.96	2.00	1.98
H	0.019	0.021	0.20
L	0.73	0.77	0.75

All Dimensions in mm

Maximum Ratings $T_A = 25^\circ\text{C}$ unless otherwise specified

Rating	Symbol	Value	Unit
DC Power Dissipation at $T_L = 75^\circ\text{C}$ (Note1)	P_D	2.0	Watts
Maximum Forward Voltage at $I_F = 200\text{ mA}$	V_F	1.2	Volts
Maximum Thermal Resistance Junction to Ambient Air (Note2)	$R_{\theta JA}$	60	K / W
Junction Temperature Range	T_J	- 55 to + 175	$^\circ\text{C}$
Storage Temperature Range	T_s	- 55 to + 175	$^\circ\text{C}$

Note :

- (1) T_L = Lead temperature at 3/8 " (9.5mm) from body
- (2) Valid provided that leads are kept at ambient temperature at a distance of 10 mm from case.



ELECTRICAL CHARACTERISTICS Rating at = 25 °C ambient temperature unless otherwise specified

TYPE	Nominal Zener Voltage		Maximum Zener Impedance			Maximum Reverse Leakage Current		Maximum DC Zener Current
	Vz @ IzT	IzT	ZzT @ IzT	Zzk @ IzK	IzK	I _R @ V _R		Iz _M
	(V)	(mA)	(Ω)	(Ω)	(mA)	(μA)	(V)	(mA)
Z2SMBF3V6	3.6	139	5.0	400	1.0	80	1.0	504
Z2SMBF3V9	3.9	128	5.0	400	1.0	30	1.0	468
Z2SMBF4V3	4.3	116	4.5	400	1.0	20	1.0	434
Z2SMBF4V7	4.7	106	4.5	550	1.0	5.0	1.0	386
Z2SMBF5V1	5.1	98.0	3.5	600	1.0	5.0	1.0	356
Z2SMBF5V6	5.6	89.5	2.5	500	1.0	5.0	2.0	324
Z2SMBF6V2	6.2	80.5	1.5	700	1.0	5.0	3.0	292
Z2SMBF6V8	6.8	73.5	2.0	700	1.0	5.0	4.0	266
Z2SMBF7V5	7.5	66.5	2.0	700	0.5	50	5.0	242
Z2SMBF8V2	8.2	61.0	2.3	700	0.5	50	6.0	220
Z2SMBF9V1	9.1	55.0	2.5	700	0.5	50	7.0	200
Z2SMBF10	10	50.0	3.5	700	0.25	50	7.6	182
Z2SMBF11	11	45.5	4.0	700	0.25	50	8.4	166
Z2SMBF12	12	41.5	4.5	700	0.25	1.0	9.1	152
Z2SMBF13	13	38.5	5.0	700	0.25	0.5	9.9	138
Z2SMBF14	14	35.7	5.5	700	0.25	0.5	10.6	130
Z2SMBF15	15	33.4	7.0	700	0.25	0.5	11.4	122
Z2SMBF16	16	31.2	8.0	700	0.25	0.5	12.2	114
Z2SMBF17	17	29.4	9.0	750	0.25	0.5	13.0	107
Z2SMBF18	18	27.8	10	750	0.25	0.5	13.7	100
Z2SMBF19	19	26.3	11	750	0.25	0.5	14.4	95
Z2SMBF20	20	25.0	11	750	0.25	0.5	15.2	90
Z2SMBF22	22	22.8	12	750	0.25	0.5	16.7	82
Z2SMBF24	24	20.8	13	750	0.25	0.5	18.2	76
Z2SMBF27	27	18.5	18	750	0.25	0.5	20.6	68
Z2SMBF30	30	16.6	20	1000	0.25	0.5	22.5	60
Z2SMBF33	33	15.1	23	1000	0.25	0.5	25.1	55
Z2SMBF36	36	13.9	25	1000	0.25	0.5	27.4	50
Z2SMBF39	39	12.8	30	1000	0.25	0.5	29.7	47
Z2SMBF43	43	11.6	35	1500	0.25	0.5	32.7	43
Z2SMBF47	47	10.6	40	1500	0.25	0.5	35.8	39
Z2SMBF51	51	9.8	48	1500	0.25	0.5	38.8	36
Z2SMBF56	56	9.0	55	2000	0.25	0.5	42.6	32
Z2SMBF62	62	8.1	60	2000	0.25	0.5	47.1	29
Z2SMBF68	68	7.4	75	2000	0.25	0.5	51.7	27
Z2SMBF75	75	6.7	90	2000	0.25	0.5	56.0	24
Z2SMBF82	82	6.1	100	3000	0.25	0.5	62.2	22
Z2SMBF91	91	5.5	125	3000	0.25	0.5	69.2	20
Z2SMBF100	100	5.0	175	3000	0.25	0.5	76.0	18
Z2SMBF110	110	4.5	250	4000	0.25	0.5	83.6	17
Z2SMBF120	120	4.2	325	4500	0.25	0.5	91.2	15
Z2SMBF130	130	3.8	400	5000	0.25	0.5	98.8	14
Z2SMBF140	140	3.6	500	5500	0.25	0.5	106.4	13
Z2SMBF150	150	3.3	575	6000	0.25	0.5	114.0	12
Z2SMBF160	160	3.1	650	6500	0.25	0.5	121.6	11
Z2SMBF170	170	2.9	675	7000	0.25	0.5	130.4	11
Z2SMBF180	180	2.8	725	7000	0.25	0.5	136.8	10
Z2SMBF190	190	2.6	825	8000	0.25	0.5	144.8	10
Z2SMBF200	200	2.5	900	8000	0.25	0.5	152.0	9.0